

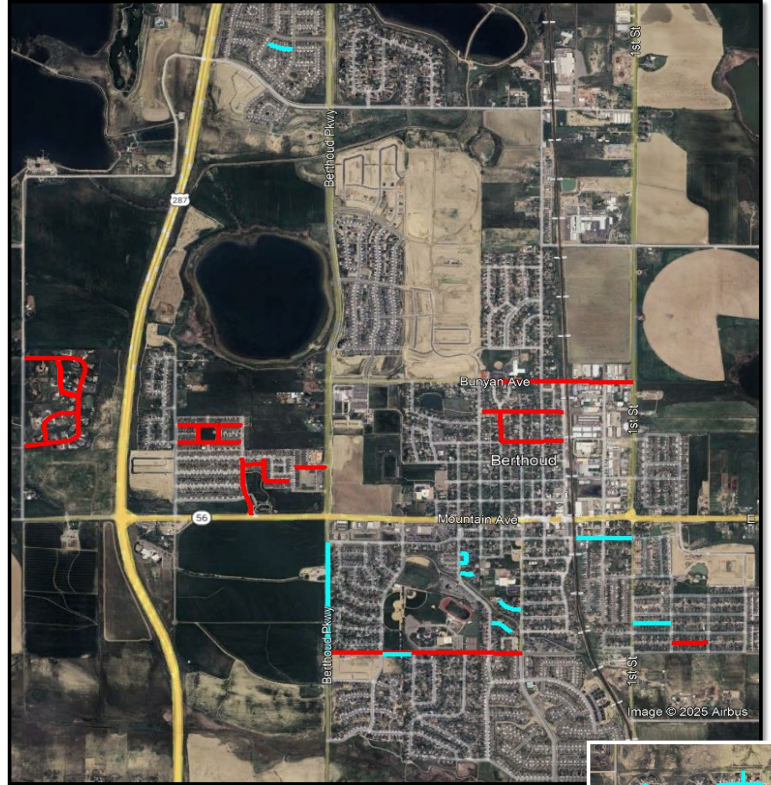
Town of Berthoud 5-Year Road Improvements Plan



Plan Outline

- Overlay or rebuild PCI labeled Priority 1 & 2 Roads
- Preserve Priority 3, 4, & 5 with crack fill, chip seal, or slurry seal

2025 & Future Improvements



2023				BLUE
Road	PCI Index	Repair	Notes	
7th Street Place	1	Mill & Overlay	COMPLETE	
13th - North of Gateway Pk. Dr.	1	Mill & Overlay	COMPLETE	
7th Street - Bunyan to Franklin	2	Mill & Overlay	COMPLETE	
Bunyan Ct.	2	6" Rebuild	COMPLETE	
6th St. Ct.	2	Mill & Overlay	COMPLETE	
6th St. - Section S. of Bunyan	2	Mill & Overlay	COMPLETE	
Franklin 6th-9th	1,2	Mill & Overlay	COMPLETE	
Lake 6th-9th	1,2	Mill & Overlay	COMPLETE	
6th - Mass. To Franklin	1	Mill & Overlay	COMPLETE	
Turner 6th-9th	2	Mill & Overlay	COMPLETE	
4th - Welch to Mountain	2	Mill & Overlay	COMPLETE	
Turner - 3rd to 6th	3	Slurry Seal	COMPLETE	
CR 44	1	Chip Seal + Patching	COMPLETE	
2024				WHITE
Road	PCI Index	Repair	Notes	
2nd - Welch to Blue	1	Full Rebuild	COMPLETE	
Franklin Ave.	NA	Extension	COMPLETE	
10th St.	4	Crackseal & Patching	COMPLETE	
Peakview	4	Crackseal & Patching	COMPLETE	
1st St.	4	Crackseal & Patching	COMPLETE	
Berthoud Parkway - Welch to Blue Bell	3	Patching	COMPLETE	
Water Ave.	3	Chip Seal + Patching	COMPLETE	
CR 10e	3	Chip Seal + Patching	COMPLETE	
2025				TEAL
Road	PCI Index	Repair	Notes	
Tipton Reconstruction	3	Reconstruction		
Spartan Ave. & 10th St.- Curb and Gutter		New Construction		
Mary's Farm - 1 Alley	1	Reconstruction		
Berthoud Pkwy - Welch Ave. to Spartan Ave.	1	Mill & Overlay		
Welch Ave - 1st To RR	1	Mill & Overlay		
Mayo Ct.	2	Mill & Overlay		
Munson Ct.	2	Mill & Overlay		
Columbine Circle	1	Mill & Overlay		
Hummingbird Pl.	1	Mill & Overlay		
Serenty Ridge	4	Slurry Seal		
Bel Cara, Welch Ave. West, North Berthoud Pkwy,				
Peakview		Patching and Crack Seal		
2026-2027 (Under Review and Planning)				RED
All roadway conditions will be assessed in 2025 to develop a new multi-year schedule starting in 2026. The roadways listed below are preliminary and have not been confirmed.				
Road	PCI Index	Repair	Notes	
Mary's Farm Alley - 1 Alley	1	Reconstruction		
Berthoud Parkway - Spartan to CR 4E	3	Mill & Overlay		
Spartan Ave. - 5th St. to Berthoud PKWY	3	Mill & Overlay		
Bunyan - 1st to 6th St. Ct.	3	Mill & Overlay		
Franklin - 3rd to 6th	3	Mill & Overlay		
6th St - Capital to Franklin	2	Mill & Overlay		
Capitol - 3rd to 7th	3	Mill & Overlay		
Lake Ave - Gateway	3	Mill & Overlay		
Gateway Park Blvd	3	Mill & Overlay - Leveling		
Gateway Park Drive.	1	Mill & Overlay		
Glacier Ave. West of 14th	1	Mill & Overlay		
Hollyberry	4	Slurry Seal		
Serviceberry St.	3	Slurry Seal		
Bearberry	3	Slurry Seal		
Bel Cara	4	Slurry Seal		